



# THERMOSPAN<sup>®</sup> 150

INSULATED SECTIONAL  
STEEL DOORS CUT  
YOUR TOTAL COST



## WAYNE DALTON COMMERCIAL DOORS

### Thermospan<sup>®</sup> 150

Wayne Dalton's Thermospan<sup>®</sup> 150 polyurethane insulated door features excellent thermal efficiency as well as strength, rigidity and durability.

The Wayne Dalton Thermospan<sup>®</sup> Series doors are the only doors in the industry with patented, roll-formed integral struts on each section, making them the most rigid doors available.

- EXCELLENT THERMAL QUALITIES  
(R-VALUE\* = 14.16, U-VALUE = 0.07)
- STANDARD SIZES UP TO 26' 2" WIDE  
AND 20' 1" HIGH
- COMMERCIAL/INDUSTRIAL DURABILITY
- INTEGRAL STEEL STRUTS FOR SUPERIOR  
STRENGTH

\*Wayne Dalton uses a calculated door section R-value for our insulated doors.



## INSULATED SECTIONAL STEEL DOOR

### Standard Features Overview

#### Thermal Efficiency

|                |  |
|----------------|--|
| R-value*       | 14.16 (2.49 K m <sup>2</sup> /W)   |
| U-value        | 0.07 (.397 W/K m <sup>2</sup> )  |
| Thermal Break  | Thermoplastic adhesive with rubber seal  |
| Air Filtration | .23 cfm/ft <sup>2</sup> at 15mph (4.20 m <sup>3</sup> /hr/m <sup>2</sup> at 24 kmph) |

#### Construction

|                      |  |
|----------------------|--|
| Section Thickness    | 1-3/8" (35 mm)   |
| Integral Struts      | Two 1-3/4" roll-formed struts per section                                      |
| Max Standard Height  | 20'1" (6126 mm)  |
| Max Standard Width   | 26'2" (7986 mm)  |
| Exterior Steel       | .009 (.228mm)  |
| Interior Per Section | Roll formed with two 1-3/4" integral struts sealed with polypropylene rib caps |
| Standard Springs     | 10,000 cycle   |

#### Warranty

TEN (10) YEARS against cracking, splitting, rust deterioration and delamination.  
ONE (1) YEAR against defects in material and workmanship

#### Color Options

|                |  |
|----------------|--|
| Interior Color | White  |
| Exterior Color | White, Tan, Brown, Gray<br>Optional: Kynar White, Kynar Brown, Kynar Beige |

#### Codes and ASTM Standard Class

|                    |  |
|--------------------|--|
| STC (ASTM E 413)   | Class 22   |
| OITC (ASTM E 1332) | Class 19   |
| ASTM E 84          | Class A  |
| UBC 17-5           | Meets  |
| ASTM D 1929        | Flash ignition = 734° F,<br>Self ignition = 950° F |

### Options

- Pass Door
- Vision Lites
- Aluminum Full View Sections
- Chain Hoist Operation
- Motor Operation
- Sensing Edges
- Photo Eyes
- High Cycle Spring (25K, 50K, 100K)
- 3" Track Option
- Solid Shafts
- Perimeter Weatherseal
- Special Track Designs
- Mullions

\*Wayne Dalton uses a calculated door section R-value for our insulated doors.

**Thermospan® 150 offers a robust combination of characteristics, including strength, rigidity, longer life and energy efficiency at a highly competitive price.**

- **Strength and Rigidity** – Features two patented 1<sup>3</sup>/<sub>4</sub>" integral roll-formed struts per section providing the highest strength-to-weight ratio.
- **Virtually Maintenance Free** – The surface of hot-dipped galvanized, structural quality steel that is factory finished with pre-painted primer and baked-on finish.
- **Thermal Efficiency** – Innovative thermal break that keeps the interior skin at room temperature, preventing condensation and frost and thereby resisting corrosion. Flexible vinyl bulb seal and non-corrosive polymer retainer prevent water and air infiltration at the bottom of the door.
- **Long Lasting** – Reinforcement plates are located at all hardware attachment locations, and industry standard commercial-grade, heavy-duty, hot-dipped galvanized hardware also contribute to the long service life of the Thermospan® 150.

### Color Options

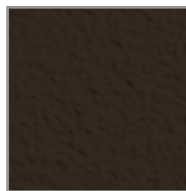
**White Embossed Stucco Finish**



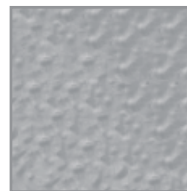
**Tan Embossed Stucco Finish**



**Brown Embossed Stucco Finish**



**Gray Embossed Stucco Finish**



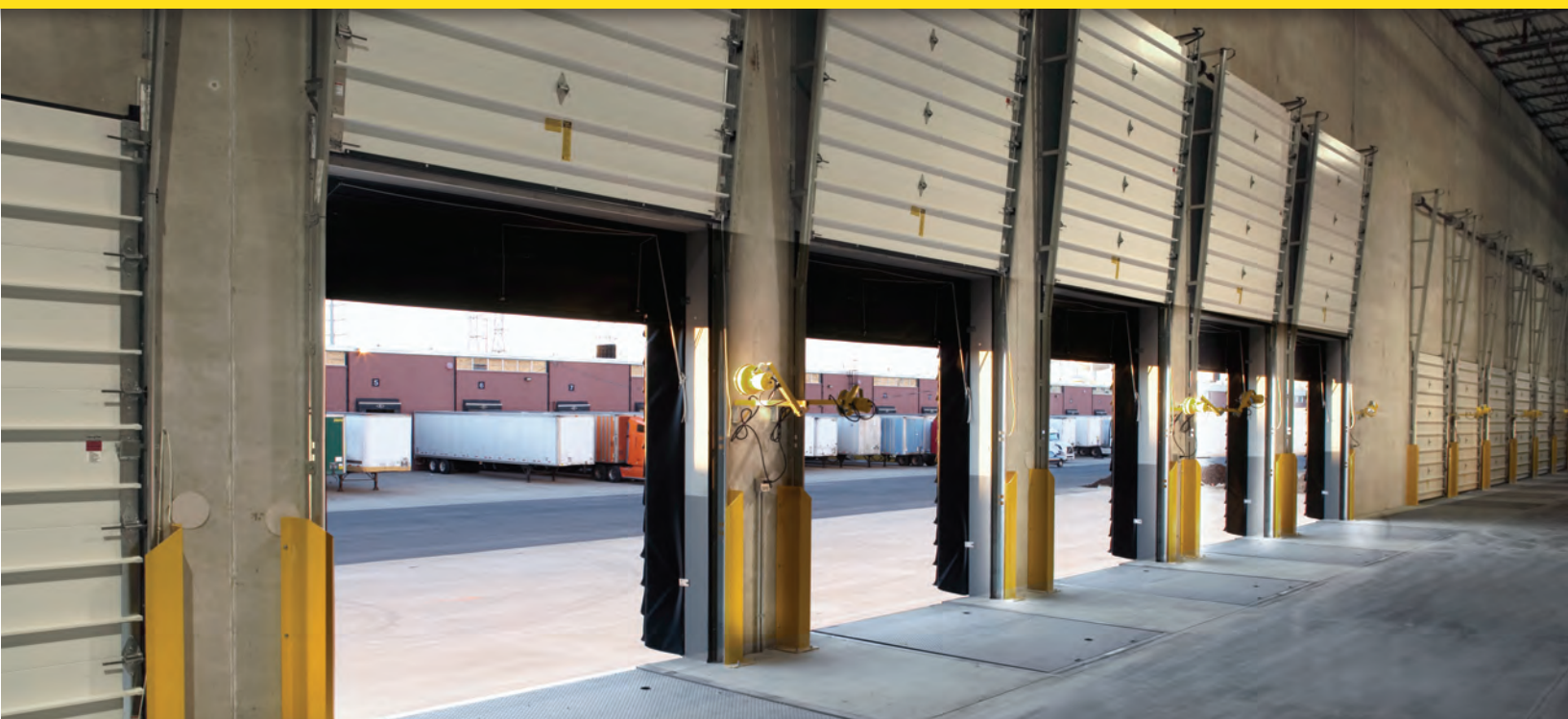
Optional Colors:  
Kynar White, Kynar Brown, Kynar Beige



Wind load options available



# THERMOSPAN<sup>®</sup> 150



## Lite Options



Vision lites allow for visibility while maintaining security.



Aluminum full view sections allow for maximum natural light and visibility.

**Flush door embossed pinstriping** (grooves) on outer skin adds strength and non-repeating random stucco exterior enhances appearance.

**Prepainted inner and outer skins** for added corrosion-resistance. Both skins are hot-dipped galvanized steel for further protection against corrosion.

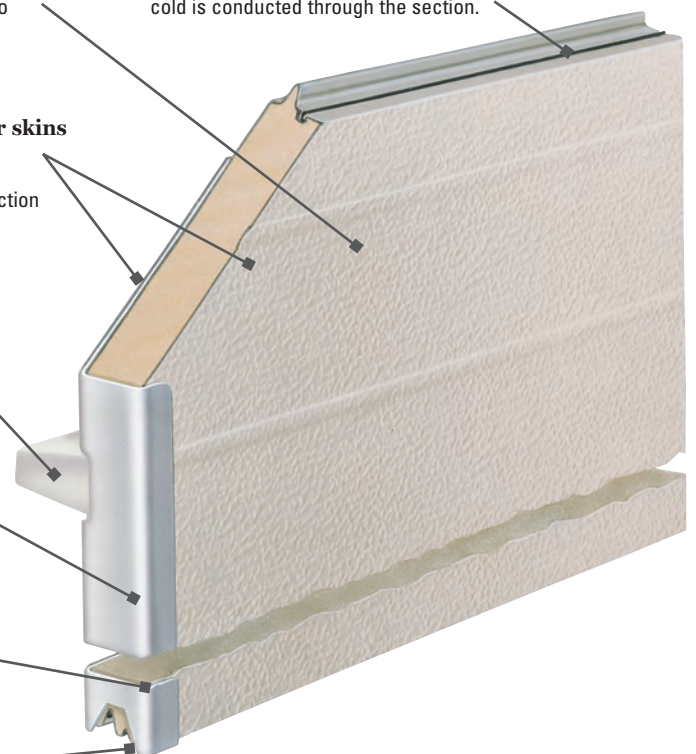
**Integral struts**  
Two 1 3/4" roll-formed struts per section add rigidity and strength.

**18-gauge wrap-around end caps** offer interior hinge attachment surface and exterior leg for proper seal against jamb.

**Solid polyurethane core** adds to insulating efficiency.

**Joint seal** prevents air infiltration and improves thermal efficiency.

**Thermal break** separates inner and outer skins at top and bottom so virtually no heat or cold is conducted through the section.



## General Operating Clearances

| Type                            | Headroom***      |          | Sideroom**   |          | Depth into Room            | Center Line of Springs     |                            |
|---------------------------------|------------------|----------|--------------|----------|----------------------------|----------------------------|----------------------------|
|                                 | 2" Track         | 3" Track | 2" Track     | 3" Track | 2" & 3" Track              | 2" Track                   | 3" Track                   |
| Standard Lift Manual 12" R      | 13"-17"          | NA       | 4.5"         | 5.5"     | Opening Height +18"        | Opening Height +12"        | N/A                        |
| Standard Lift Manual 15" R      | 15"-20"          | 16"-21"  |              |          |                            | Opening Height +13"        | Opening Height +14"        |
| Standard Lift Motor Oper. 12" R | 15"-20"          | NA       |              |          | Opening Height +66"        | Opening Height +12"        | N/A                        |
| Standard Lift Motor Oper. 15" R | 15"-20"          | 18"-24"  |              |          |                            | Opening Height +13"        | Opening Height +14"        |
| High Lift Manual                | High Lift +12"   |          | 24" One Side |          | Opening Height -Lift +30"  | Opening Height +Lift +6.5" | Opening Height +Lift +7.5" |
| High Lift Motor Oper.           |                  |          |              |          |                            |                            |                            |
| Vertical Lift Manual            | Door Height +20" |          | 4.5"         | 5.5"     | 18"                        | Double Door Height +13"    |                            |
| Vertical Lift Motor Oper.       |                  |          | 24" One Side |          |                            |                            |                            |
| Low Headroom Manual*            | 6"-15"           | 6"-15"   | 6"           | 9"       | Opening Height +20" to-26" | N/A                        |                            |
| Low Headroom Motor Oper.*       | 9"-17"           | 9"-17"   |              |          | Opening Height +66"        |                            |                            |

\*For low headroom, springs must be rear mount to achieve minimum headroom listed. Front mount torsion headroom depends on drum size, and varies over the range listed. See approval drawing.

\*\*Side-room of 8" required, one side, for doors with chain hoist.

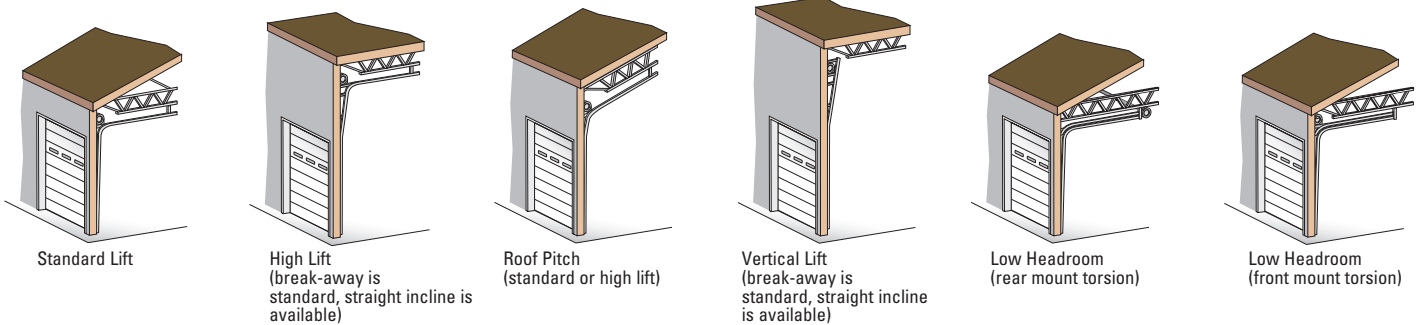
\*\*\*Headroom depends on drum size, and varies over the range listed. See approval drawing.

## Panel/Section Selection Guide

| Door Section and Lite Selection |                  |                           | Door Height and Section Selection |                    |
|---------------------------------|------------------|---------------------------|-----------------------------------|--------------------|
| Door Width                      | Number of Panels | Maximum Number of Windows | Door Height                       | Number of Sections |
| Up to 9'2"                      | 2                | 2 or 3                    | Up to 8'1"                        | 4                  |
| 9'3" to 12'2"                   | 3                | 3 or 4                    | 8'8" to 10'1"                     | 5                  |
| 12'3" to 16'2"                  | 4                | 4 or 5                    | 10'5" to 12'1"                    | 6                  |
| 16'3" to 19'2"                  | 5                | 6                         | 12'2" to 14'1"                    | 7                  |
| 19'3" to 24'2"                  | 6                | 7                         | 14'2" to 16'1"                    | 8                  |
| 24'3" to 26'2"                  | 7                | 7                         | 16'2"-18'1"                       | 9                  |
|                                 |                  |                           | 18'2" to 20'1"                    | 10                 |
|                                 |                  |                           | 20'2" and Up                      | Call Factory       |

For assistance from the factory, please call 800-827-3667.

## Track Selection Guide



FOR TECHNICAL INFORMATION, VISIT [WWW.WAYNE-DALTON.COM/COMMERCIAL](http://WWW.WAYNE-DALTON.COM/COMMERCIAL)

## Architect Resource Center

[www.wayne-dalton.com/commercial](http://www.wayne-dalton.com/commercial)

Go to [www.wayne-dalton.com/commercial](http://www.wayne-dalton.com/commercial) and click on the Architect Resource Center. Here you will quickly find all of the specifications, drawings and documents you need to complete your project.

DISTRIBUTED BY:



©2015 Wayne Dalton, a division of Overhead Door Corporation. Consistent with our policy of continuing product improvement, we reserve the right to change product specifications without notice or obligation. Item 332535 2M 1/15 JAR